



# ILLINOIS 47

*US Route 14 to Charles Road*

## Illinois Route 47 Public Meeting #1

*February 3, 2010*



Illinois Department  
of Transportation





# Study Purpose

- In-depth look at:
  - Existing roadway
  - Safety and capacity
  - Drainage issues
  - Analysis of future transportation needs



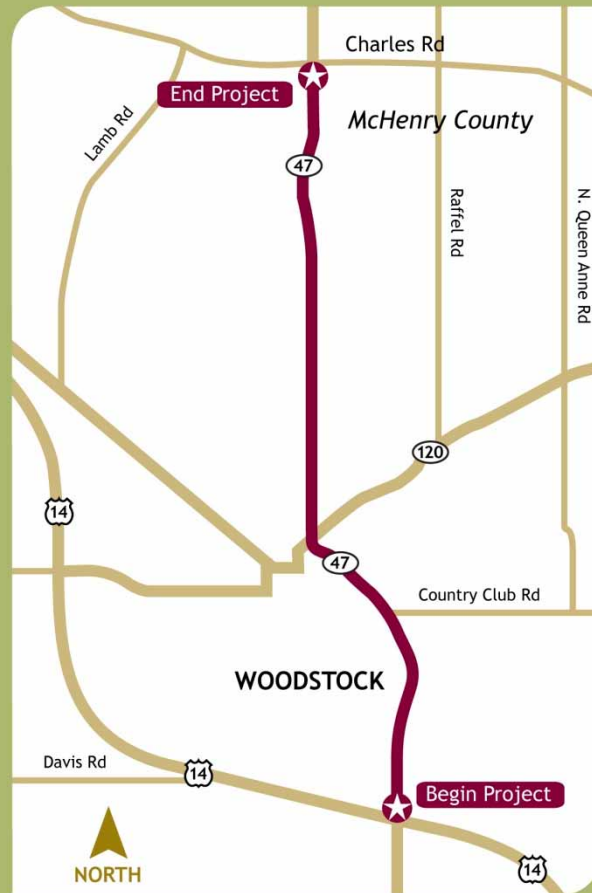


## *Meeting Purpose*

- Background of study area
- Study process and schedule
- Identify study team members
- Solicit public input
- Next steps



# IL 47 Study Area



- Includes mixture of land uses
- Designated as a Strategic Regional Arterial (SRA)



# Who is Involved?





# *What are the Phases of IDOT Projects?*





# Where Are We Now?

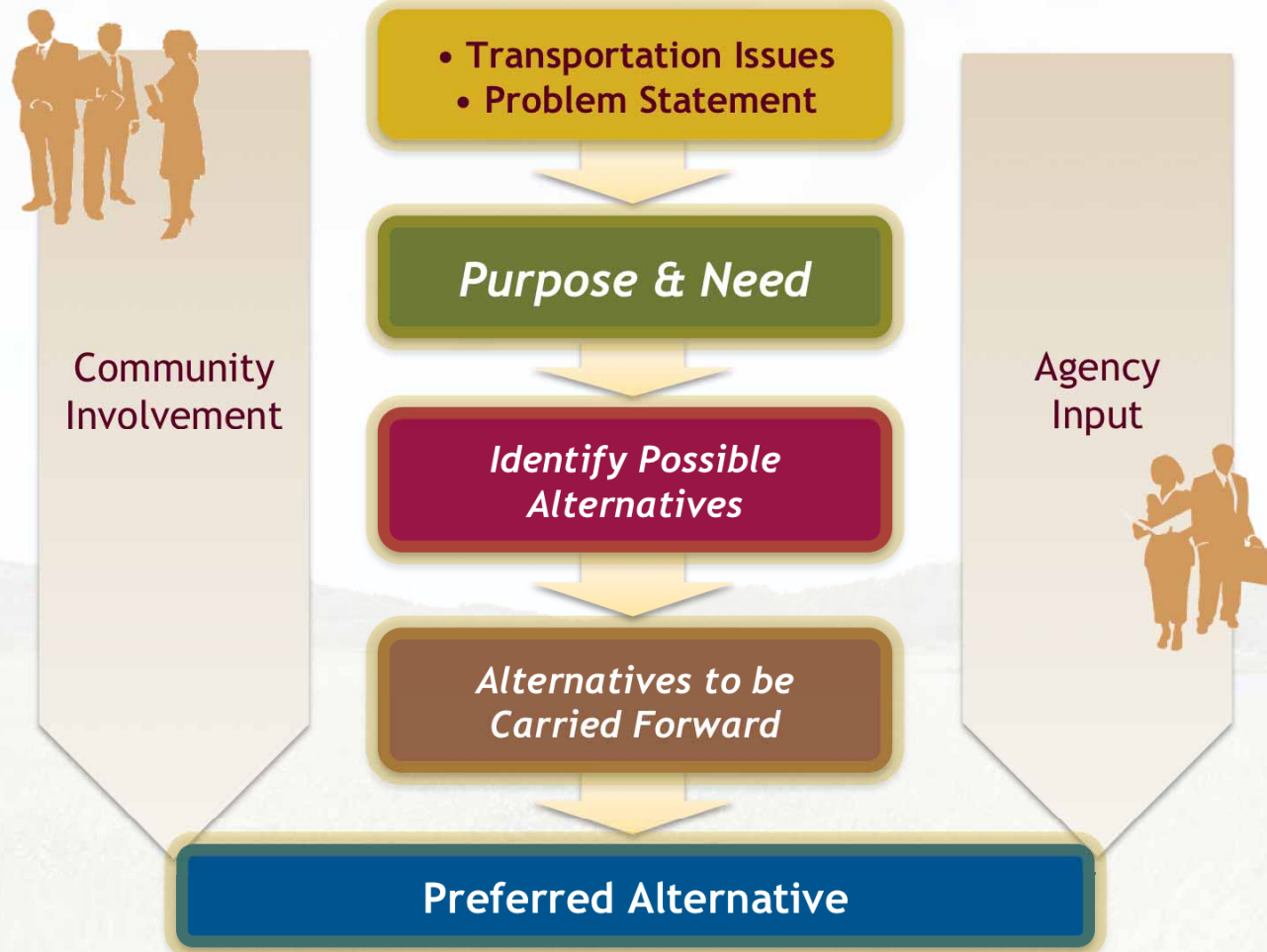
## Phase I

Preliminary  
Engineering &  
Environmental  
Study

- Proceed as an Environmental Assessment
- Will consider input from previous studies
- Funding exists only for this Phase I study



# Project Process





# Identify Transportation Needs

- Transportation Issues
- Problem Statement

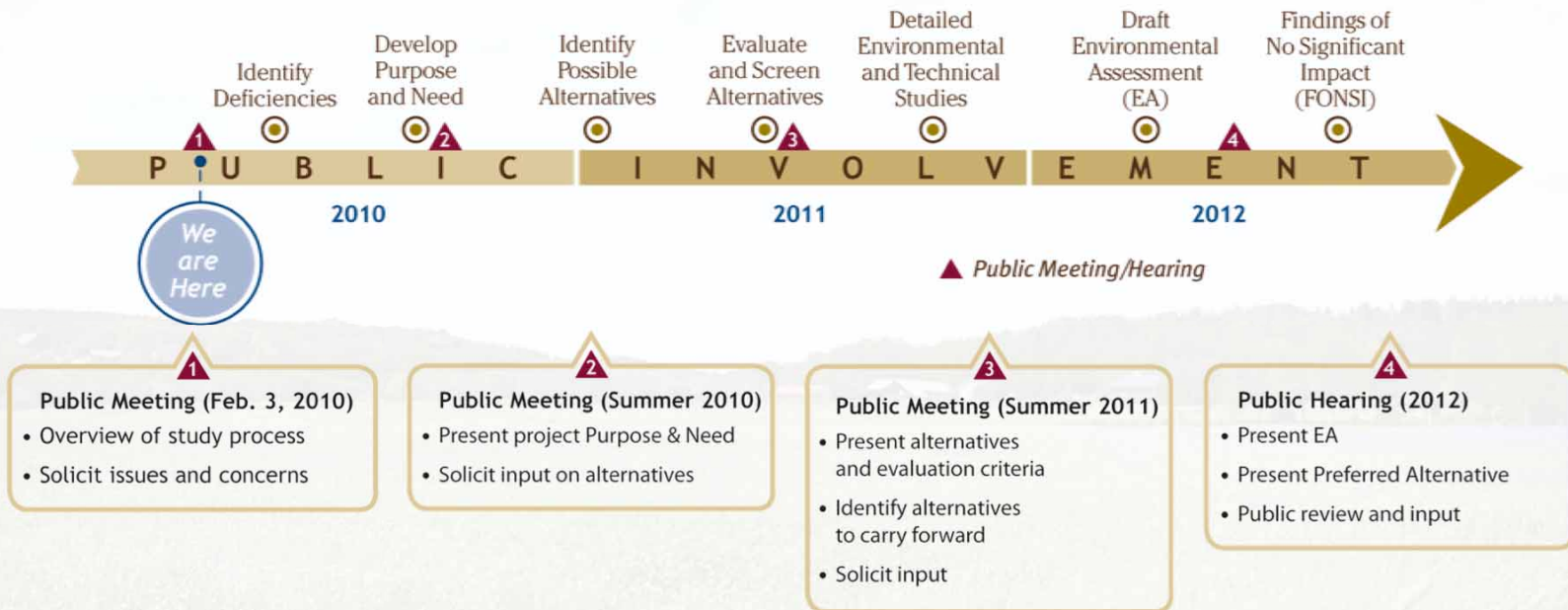


- Data Collection
  - Population and Employment Forecasts
  - Traffic and Crash Data
  - Transit and non-motorized transportation data
  - Local and regional plans
- Stakeholder Input
- Identification of Transportation Needs



# Phase I Study Process

## Project Schedule





# What is Context Sensitive Solutions?

- Develop, build and maintain cost effective transportation facilities
- Involves all stakeholders
- Fits into its surroundings
- Addresses all modes of transportation
- Preserve aesthetic, historic, and environmental resources
- Maintain safety and mobility





# Consensus

- Goal is to achieve consensus



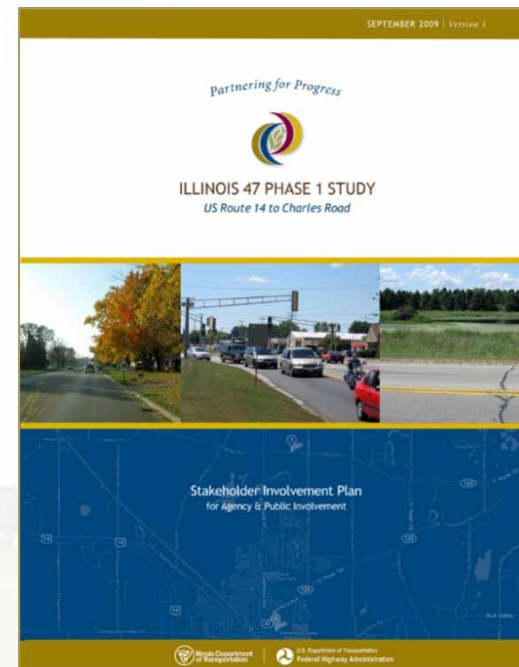
Consensus is defined as:

“ “ *When a majority of the stakeholders agree on a particular issue, while the remainder of stakeholders agree its input has been heard and duly considered and the process as a whole was fair. ” ”*



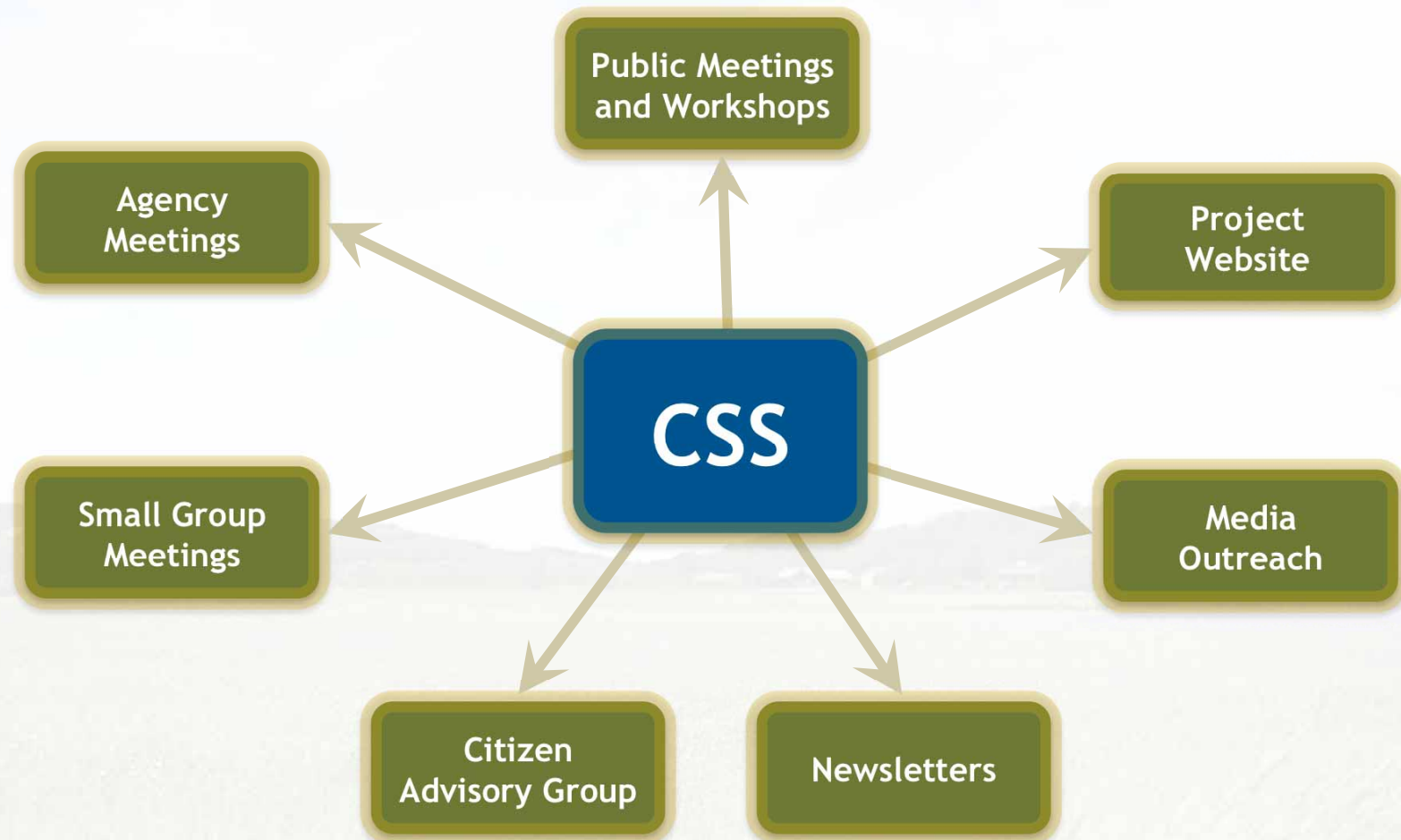
# Stakeholder Involvement Plan (SIP)

- Blueprint for defining outreach tools and methods
- Framework for achieving consensus
- Identifies roles and responsibilities of participants
- Establishes timing of stakeholder activities
- SIP is available for review today and at [www.IL47woodstockstudy.com](http://www.IL47woodstockstudy.com)





# Public Involvement Opportunities





# Project Study Group (PSG)



- **PSG Purpose:**
  - Will meet throughout the study process to provide technical oversight and expertise in key areas including study process, agency procedures and standards, and technical approaches
  - IDOT and FHWA make ultimate project decisions for the project
- **PSG Responsibility:**
  - Manage the project development process
  - Identify and resolve project issues
  - Promote partnerships
  - Work to develop consensus



# Citizen Advisory Group (CAG)

PROJECT STUDY GROUP  
IDOT • FHWA • Consultant

## CITIZEN ADVISORY GROUP

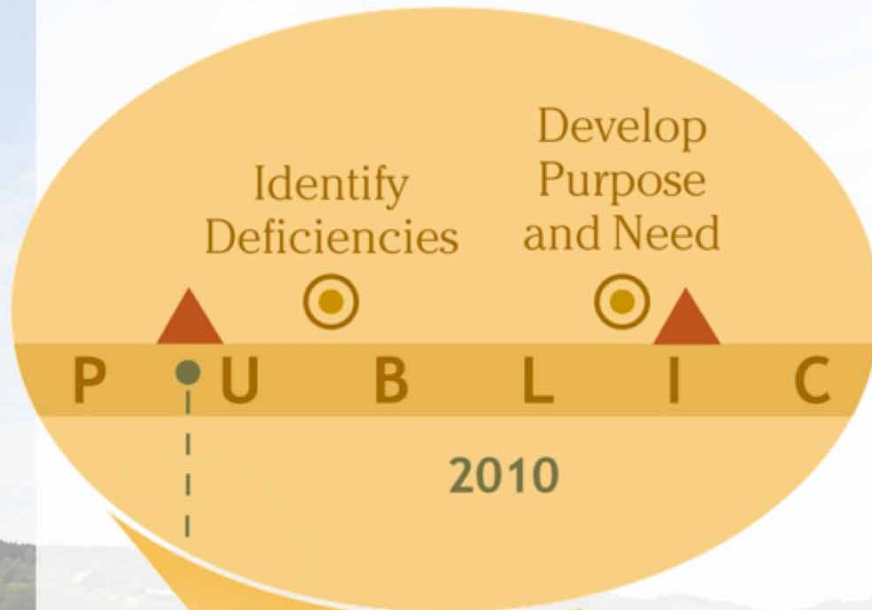
**COMMUNITY LEADERS**  
*(Mayor / Manager and County Chairman or designees) with authority to speak on behalf of their organization*

**STAKEHOLDERS** *with expertise or technical interest in areas of transportation, land use, environment and economic development in the study area*

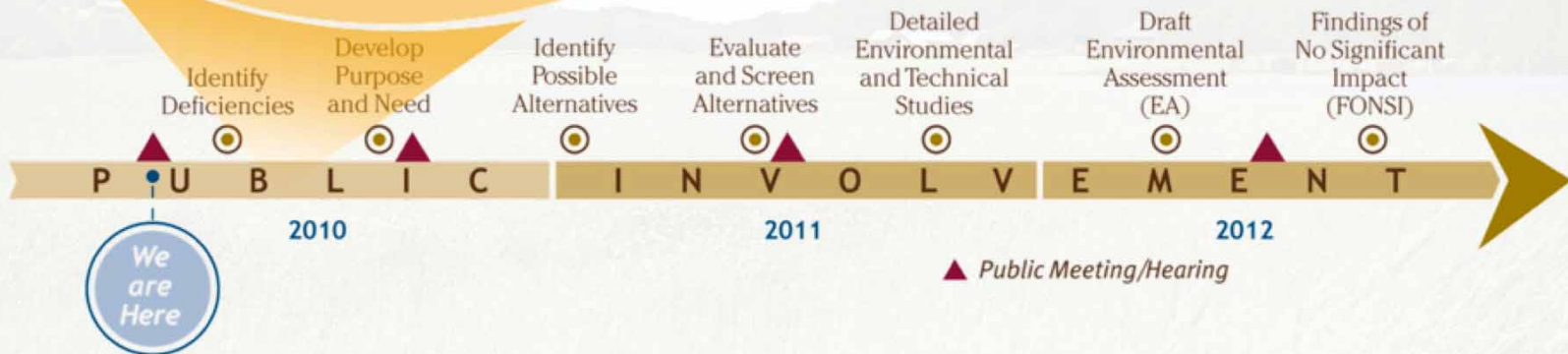
- **Purpose:**
  - Provide input on Purpose & Need Statement
  - Provide input on alternatives to be carried forward
- **Responsibility:**
  - Commit to attend CAG meetings
  - Collaborate with Project Study Group
  - Provide input and consensus



# Next Steps



- Existing conditions analyses and deficiencies
- Environmental data collection
- Purpose and Need





## *What's Important To You?*

- Identify transportation issues on aerial maps
- Written comment forms
- Online comment forms at [www.IL47woodstockstudy.com](http://www.IL47woodstockstudy.com)
- Comments received by February 18, 2010 will become part of the public meeting record.



## ILLINOIS 47

US Route 14 to Charles Road

# Thank you!

*Please visit the exhibit room and  
meet with study team members.*

